



SITEMAP[®]
PROJECT



▶ LACK OF ACCURATE INFRASTRUCTURE DATA COSTS:



TIME



BUDGET



SAFETY



REPUTATION



**CHANGE ORDERS/
REWORKS**



**INACCURATE
DATA**



**DOWNTIME &
COST OVERRUNS**



**PROPERTY
DAMAGES**





CONTROL DATA > CONTROL DAMAGE

SITEMAP® PROJECT PUTS YOU IN CONTROL BY SECURING YOUR LAYERED AND MAPPED SUBSURFACE AS-BUILT DATA IN ONE SINGLE SOURCE OF TRUTH FOR THE LIFE OF YOUR CONSTRUCTION PROJECT: ACCESSIBLE & SHAREABLE, 24/7.

GAIN CONTROL

- Create a single source of truth for everyone on your team for the duration of your project

STREAMLINE COMMUNICATIONS

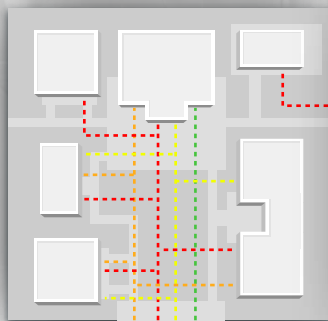
- Strip away confusion by reinforcing individual and team objectives with customized communications

ENSURE ACCURACY

- **You can't afford sub-par locates and neither can we.** That's why SiteMap[®] Project is powered by GPRS' 99.8%+ accurate utility locates & concrete scans and 2-4mm accurate 3D laser scans – to make sure you get the best quality information, efficiently delivered



AS-BUILT VS AS-INTENDED DRAWINGS



~~AS-BUILT~~
AS-INTENDED



GPRS
AS-BUILT

A white exclamation mark inside a grey circle, positioned above the section header.

A tidy site

Your as-builts are only as good as the information they're built on. That's why your GPRS Project Manager is not a technician, they are an expert consultant, certified in Subsurface Investigation Methodology, utilizing multiple technologies to provide you with the most accurate locates, maps, and measurements in the industry.

SiteMap® Project & GPRS bridge the gap between outdated record drawings and real-time reality capture with 2D CAD drawings, 3D WalkThru tours, and can even give you an integrated digital twin that combines your entire jobsite, above and below ground – so that every member of your team has the same information – whether they're on site, or across the country.

THE GPRS DIFFERENCE



GPRS

ACADEMY

IN PURSUIT OF **100%**
SUBSURFACE
DAMAGE
PREVENTION



SITEMAP[®]
PROJECT

ELECTRICIAN



PLUMBER



MECHANICAL



GENERAL CONTRACTOR

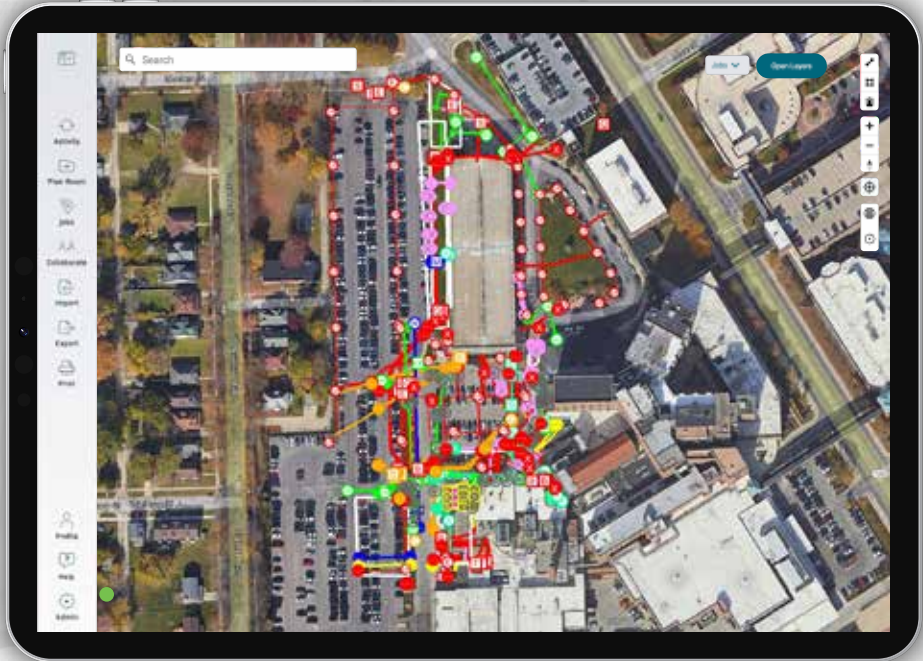




NO MORE GUESSING. NO MORE BAD AS-BUILTS.

SiteMap® Project allows general contractors and their teams to prevent damages, capture accurate existing conditions, and plan more effectively.

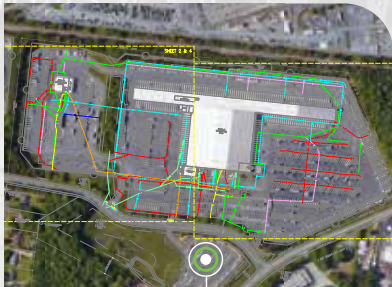
You control the quality of your underground utility maps & as-builts because when you have SiteMap® Project, any sub or trade who orders a locate or measurement job is required to utilize GPRS' 99.8%+ accurate utility locates and concrete scans, and our 2-4mm accurate 3D laser measurements for the life of your project.





SITEMAP[®] HELPS

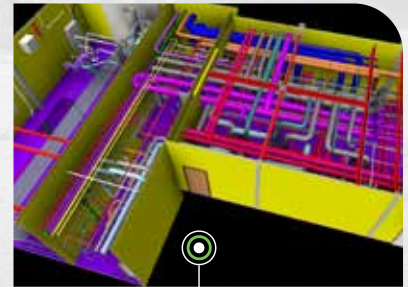
**UTILITY LOCATING
& MAPPING**



**VIDEO PIPE INSPECTION
VIDEO AND REPORTS**



**PHOTOGRAMMETRY &
3D LASER IMAGERY**



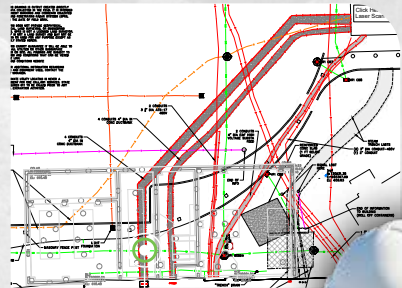


YOU MANAGE >>>

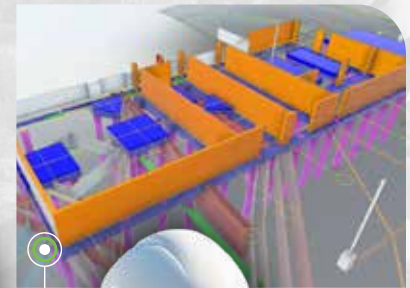
VIRTUAL TOURS



CAD



3D BIM MODELS





GET STARTED NOW

Three right-pointing chevrons are positioned below the word "NOW". The first chevron is green, and the second and third are blue.

SITEMAP.COM

SCAN THE QR CODE
TO LEARN MORE >

