



**SITEMAP**<sup>®</sup>  
PROJECT





# LACK OF ACCURATE INFRASTRUCTURE DATA COSTS:

  
**TIME**

  
**SAFETY**

  
**BUDGET**

  
**REPUTATION**



**CHANGE ORDERS/  
REWORKS**

**INACCURATE  
DATA**

**DOWNTIME &  
COST OVERRUNS**

**PROPERTY  
DAMAGES**





# CONTROL DATA > CONTROL DAMAGE

**SITEMAP® PROJECT PUTS YOU IN CONTROL BY SECURING YOUR LAYERED AND MAPPED SUBSURFACE AS-BUILT DATA IN ONE SINGLE SOURCE OF TRUTH FOR THE LIFE OF YOUR CONSTRUCTION PROJECT: ACCESSIBLE & SHAREABLE, 24/7.**

## **GAIN CONTROL**

- Create a single source of truth for everyone on your team for the duration of your project

## **STREAMLINE COMMUNICATIONS**

- Strip away confusion by reinforcing individual and team objectives with customized communications

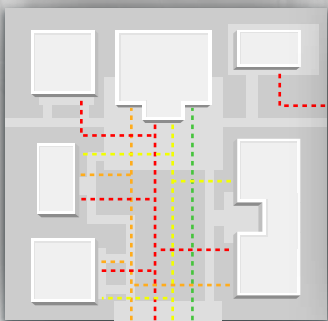
## **ENSURE ACCURACY**

- You can't afford sub-par locates and neither can we. That's why SiteMap® Project is powered by GPRS' 99.8%+ accurate utility locates & concrete scans and 2-4mm accurate 3D laser scans – to make sure you get the best quality information, efficiently delivered

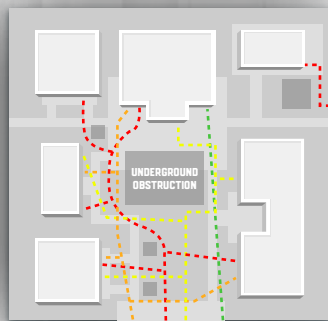




## AS-BUILT VS AS-INTENDED DRAWINGS



~~AS-BUILT AS-INTENDED~~



GPRS AS-BUILT

### A tidy site

Your as-builts are only as good as the information they're built on. That's why your GPRS Project Manager is not a technician, they are an expert consultant, certified in Subsurface Investigation Methodology, utilizing multiple technologies to provide you with the most accurate locates, maps, and measurements in the industry.

SiteMap® Project & GPRS bridge the gap between outdated record drawings and real-time reality capture with 2D CAD drawings, 3D WalkThru tours, and can even give you an integrated digital twin that combines your entire jobsite, above and below ground – so that every member of your team has the same information – whether they're on site, or across the country.

## THE GPRS DIFFERENCE



IN PURSUIT OF **100%**  
SUBSURFACE  
**DAMAGE**  
PREVENTION



**SITEMAP**  
PROJECT



ELECTRICIAN



PLUMBER



MECHANICAL



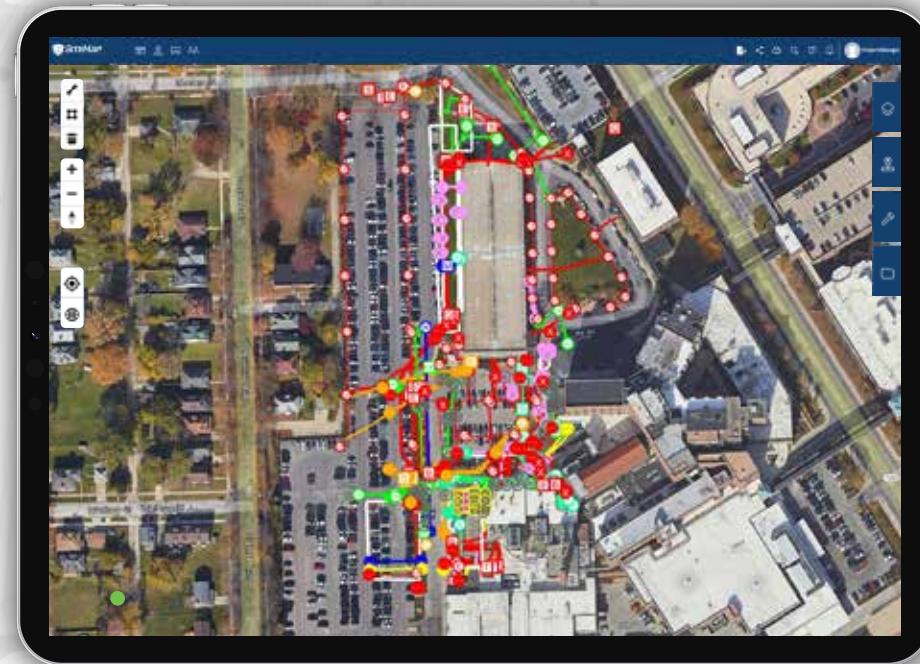
GENERAL CONTRACTOR



# NO MORE GUESSING. NO MORE BAD AS-BUILTS.

SiteMap® Project allows general contractors and their teams to prevent damages, capture accurate existing conditions, and plan more effectively.

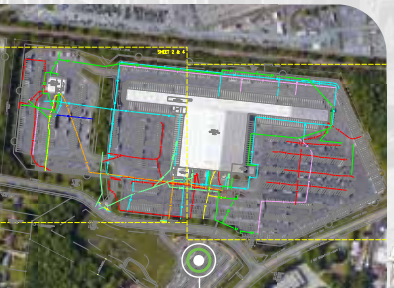
You control the quality of your underground utility maps & as-builts because when you have SiteMap® Project, any sub or trade who orders a locate or measurement job is required to utilize GPRS' 99.8%+ accurate utility locates and concrete scans, and our 2-4mm accurate 3D laser measurements for the life of your project.





# SITEMAP<sup>®</sup> HELPS YOU MANAGE

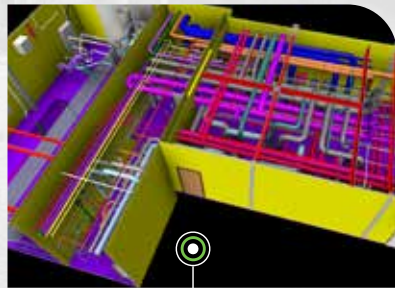
UTILITY LOCATING & MAPPING



VIDEO PIPE INSPECTION VIDEO AND REPORTS



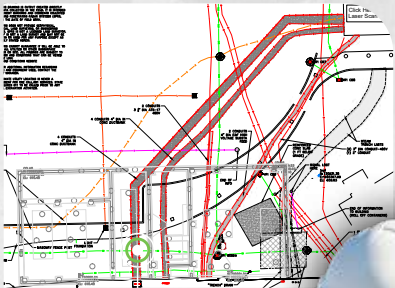
PHOTOGRAMMETRY & 3D LASER IMAGERY



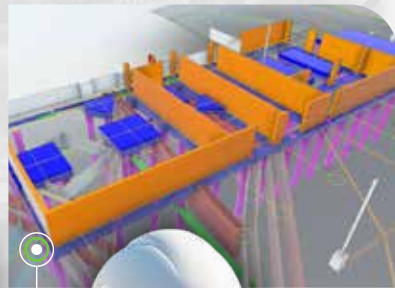
VIRTUAL TOURS



CAD

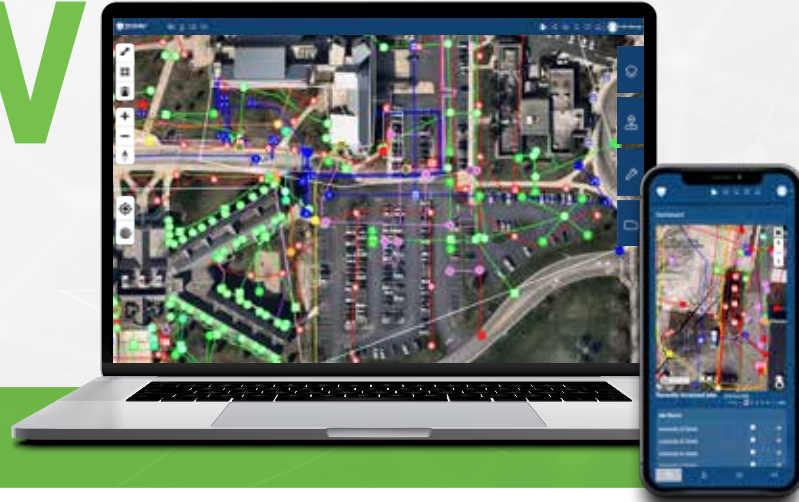


3D BIM MODELS





# GET STARTED NOW



[SITEMAP.COM](https://www.sitemap.com)

SCAN THE QR CODE  
TO LEARN MORE 

