



SiteMap is a singular subsurface infrastructure mapping solution that allows users to experience their facility data with ease. SiteMap provides map data, subsurface utility information, and a common repository for facility artifacts. This geospatial solution also acts as an all-inclusive digital storage space for blueprints, as-built drawings, maintenance logs, permits, and more. The beauty of SiteMap is that it can geolocate every piece of information so the content can be located and cross-referenced on demand. SiteMap simplifies facility management by providing its users with a powerful all-in-one solution.

ORGANIZE YOUR ASSETS

- ACCURATELY MAPPED
- DIGITALLY STORED
- EASILY ACCESSIBLE

DIGITAL PLAN ROOM

The Digital Plan Room acts as the central repository for facility documents. These documents are directly viewable in the Map Viewer when appropriately tagged with the location information. The Digital Plan Room is a secure space to store essential and relevant facility documents.

MAP VIEWER

The Map Viewer makes viewing facility data easy as it allows the user to attach locational data to specific uploaded documents. This feature enables facility managers to track and locationally designate documents for reference quickly. Additionally, this makes sharing and updating location documentation a more fluid experience.



**GPRS
SERVICES**
GPRSINC.COM



UTILITY LOCATING



VIDEO PIPE INSPECTION



LEAK DETECTION



MAPPING & MODELING



CONCRETE IMAGING



3D LASER SCANNING

SCHEDULE A PROJECT

Nate Stair

Markets: Healthcare, Industrial/
Manufacturing, Data Centers,
Facilities/Property Management
330-388-7903
Nate.Stair@gprsinc.com

Rhett Teller

Markets: Higher Education,
Airports, Theme Park/
Stadiums, Military Bases
202-878-9193
Rhett.Teller@gprsinc.com



- ✓ TRAINING
- ✓ EQUIPMENT
- ✓ METHODOLOGY

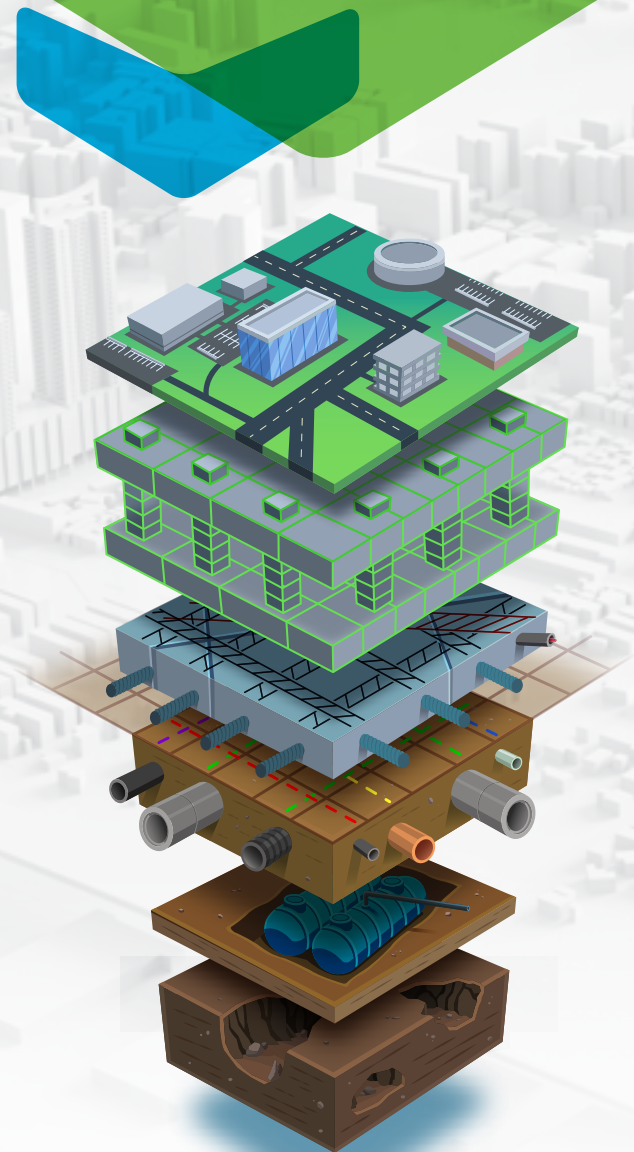
THE SECRET BEHIND OUR 99.8% ACCURACY

The use of proper training, multiple technologies and a field-tested methodology are the key to a successful utility locate. GPRS has mastered all three components through the utilization of the SIM Certification.

SIMSPEC.ORG



CAPTURE, CORRELATE &
CONTAIN YOUR BUILT WORLD
WITH SITEMAP PRO





A **SiteMap Pro** subscription gives you everything you love about the Personal Tier, with a lot more control of how your data is created, saved, stored, and shared to Intelligently Visualize The Built World Above and Below Ground™.

The most important differences are the amount of data you can store in your Digital Plan Room (customized to meet your needs) and the ability to create, store, and share new projects and line notes via the GPS-enabled SiteMap Mobile App.

At the **SiteMap Pro** Tier, you have the freedom to customize your Digital Plan Room's header and footer, color scheme, and tailor the site to your personal branding needs. Plus, we supply you with white-glove, concierge-level Priority VIP Customer Support to get you up and running, and to keep your data flow moving, cross-referenced, and most importantly, secure.



SIDE-BY-SIDE TIER COMPARISON

DIGITAL PLAN ROOM

Access to GPRS Maps & Models	Yes	Yes
Map & Model Sharing	Yes	Yes
Personal Upload Allocation/Permission	No	Yes
Additional Content Uploads	No	Yes
Space Allocation	0	Customized
Additional Storage Purchase	No	Customized
Enterprise DPM w/Upload & Access Permissions	No	Yes

SITE CREATION

User Site Creation	No	Yes
User Subsite Creation	No	Yes
User Site Sharing	No	Yes
User Subsite Sharing	No	Yes

MOBILE APP

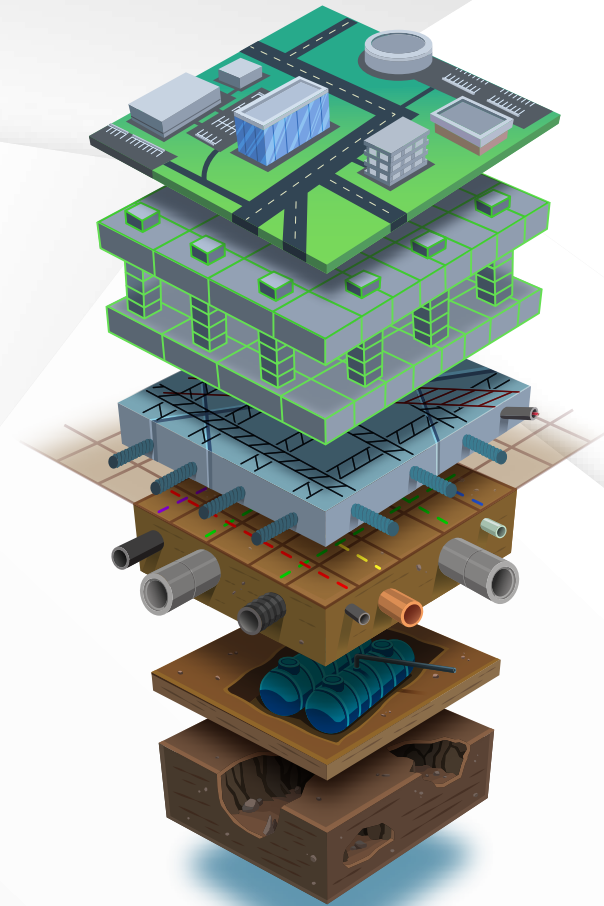
View Data	Yes	Yes
Edit Data	No	Yes
Create New Projects & Line Work via GPS-enabled Mobile App	No	Yes
Access to GPRS Maps & Models via Digital Plan Room	Yes	Yes
Additional Content Access via Digital Plan Room	No	Yes

PERSONLAZATION

Customize Header & Footer	No	Yes
Customize Color Scheme	No	Yes
Tailor Branding Identity	No	Yes

SUPPORT

Online Help Documentation	Yes	Yes
Customer Support Line	Yes	Yes
VIP Support Services	No	Yes



When you subscribe to **SiteMap Pro**, you receive unprecedented white-glove service, access, and utility that allow you to make our SiteMap, *your* SiteMap.

That means your as-builts, utilities, scans, maps, models, drawings, specifications, notes and communications for every jobsite or facility, all in one secured and encrypted space, with GPRS' industry-leading geospatial infrastructure data integration, completely under your control.

What can we help you visualize?

TAKE THE **NEXT STEP** TO KEEP YOUR CAMPUS SAFE. **CONTACT US TODAY. WWW.SITE-MAP.COM**