

SEE YOUR ENTIRE CAMPUS WITH SITEMAP.

ARE YOU FRUSTRATED WITH

- UNORGANIZED DRAWINGS?
- NOT HAVING EVERYTHING IN ONE PLACE?
- INACCURATE INFORMATION?
- CHANGE ORDERS?

FACILITY DISORGANIZATION IS STEALING YOUR TIME. INACCURATE AND UNORGANIZED INFRASTRUCTURE DATA POSES A RISK TO SAFETY AND INCREASES COSTS.

OUR SOLUTION

SiteMap is a singular infrastructure mapping solution that makes facility data more accessible. SiteMap simplifies facility management by providing its users with a common repository for map data, subsurface utility information, and facility artifacts. This geospatial solution also acts as an all-inclusive digital storage space for blueprints, as-built drawings, maintenance logs, permits, and more.

DIGITAL PLAN ROOM

The Digital Plan Room acts as the central repository for facility documents. These documents are directly viewable in the Map Viewer when appropriately tagged with the location information. The Digital Plan Room is a secure space to store essential and relevant facility documents.

- FILE STORAGE
- HISTORICAL DRAWINGS
- SITE PHOTOS
- DRONE FOOTAGE
- DIGITIZED BLUEPRINTS

MAP VIEWER

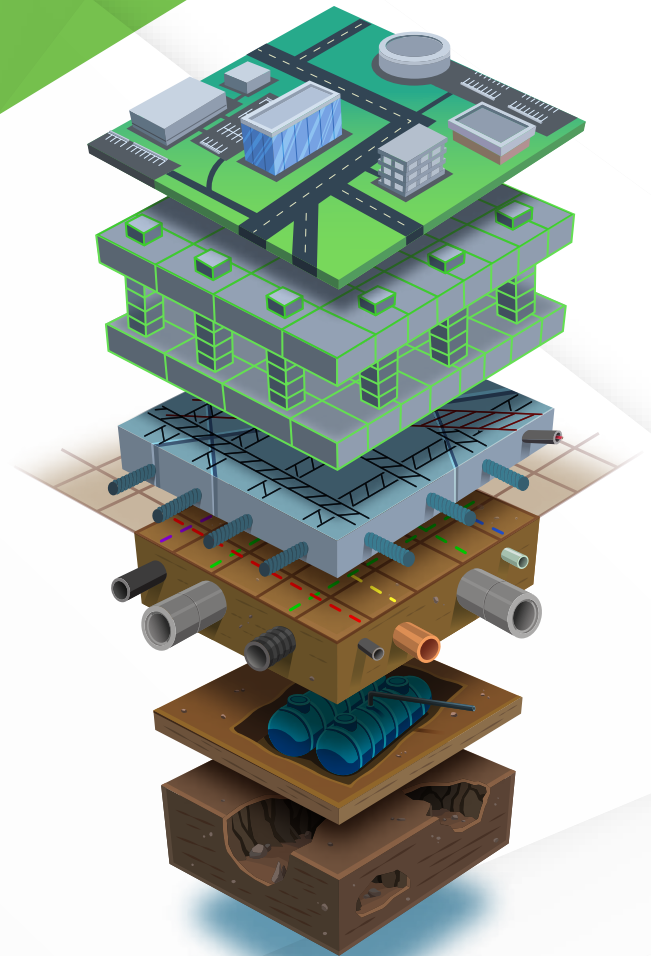
The Map Viewer makes viewing facility data easy as it allows the user to attach locational data to specific uploaded documents. This feature enables facility managers to track and locationally designate documents for reference quickly. Additionally, this makes sharing and updating location documentation a more fluid experience.

- VIEWABLE, SEARCHABLE MAPS
- 3D MODELING VIEWER
- TAG SITE FEATURES TO MAPS

ORGANIZATION SIMPLIFIED

It's common for subsurface infrastructure data to be fragmented. SiteMap alleviates the obstacles that hinder effective organization, such as:

- DRAWINGS BEING STORED IN MULTIPLE PLACES
- MAINTAINING OUTDATED AS-BUILT DRAWINGS
- RETAINING PARTIAL OR INCOMPLETE SITE DATA



SITEMAP[®]

POWERED BY 

TAKE THE NEXT STEP TO KEEP YOUR CAMPUS SAFE. CONTACT US TODAY. WWW.SITE-MAP.COM